

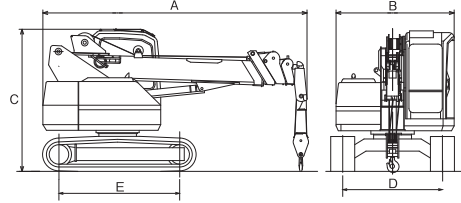
# Crawler Crane 4.9ton • Glassworker

## Crawler Crane 4.9 ton

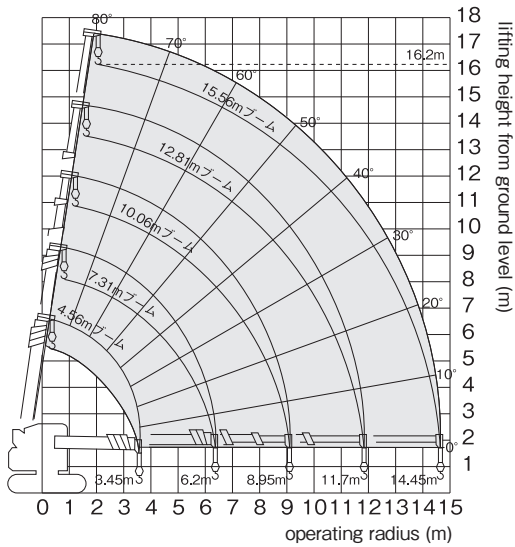


LC755

### Dimensions



### Working Range Diagram



### Specifications

Make	MAEDA	
Model	LC755	
Total Weight (kg)	8,800	
Dimensions (mm)	Overall Length	A
	Overall Width	B
	Overall Height	C
	Track Gauge	D
	Length of Track on Ground	E
Performance	Min. Ground Clearance	380
	Max. Lifting Load (ton x m)	4.9 x 2.1
	Max. Operating Radius (m x ton)	14.45 x 0.15
	Max. Lifting Height (m)	16.2
	Boom Length (mm)	4,560 ~ 15,560
	Boom Telescopic Speed (sec/m)	25 / 11.0
Swing Speed (rpm)	2.1	
Travel Speed (km/h)	2.9	
Fly Wheel House Power (kW[PS]/rpm)	44.1[60 ps] / 2,000	
Fuel Tank Capacity (ℓ)	80	

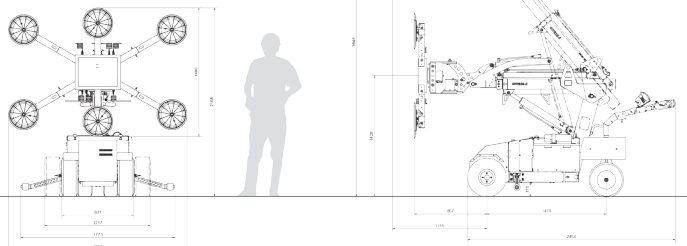
## Glassworker



### Specifications

Make	UPLIFTER
Model	GW625
Load Capacity (kg)	625
Working Height (m)	3,646 Centre Vacuum Cross
Dead Weight (kg)	1,035 - 1,095
Length (m)	2,454
Width (m)	0,831
Indoor	Yes
Outdoor	Yes
Forward Scope (m)	1.49 - 2.10
Operating Time (hours)	up to 8.0

### Dimensions



### GW625-2 Highlifter

